

Recent years have seen online GLAM collections multiply in numbers. The opening of these collections to the public has increased the need to add meaning to data for both humans to understand it and computers to process it. Linked Open Data, as part of the Semantic Web technology, has a major role to play in offering fresh opportunities for intelligent discovery only of semantically relevant information.

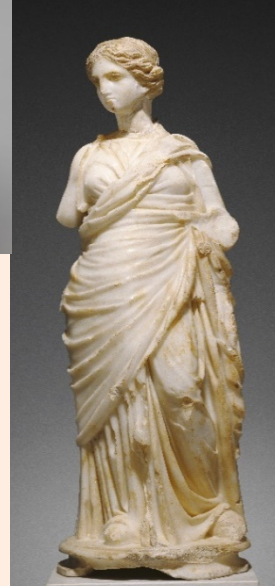


Gallery, Library, Archive, Museum

Objective: Information about cultural heritage objects in archaeological, art-historical, and archival collections bristles with terms. The use of precise definitions for the terms used when cataloguing these objects is crucial. The solution so far has been to build thesauri of terms. Thesauri help in assigning preference to which terms are to be used and which terms can be associated with them.

With the advent of Semantic web technologies, however, the need has arisen to build domain ontologies compliant with the knowledge and the epistemological principles of domain experts, while preserving linguistic diversity, each expert's view-point, as well as the particularity of each collection.

In contrast to thesauri, domain ontologies and terminologies permit a degree of "formalization". If the terms used to describe cultural heritage objects are precisely and formally defined in regard to the knowledge of the domain, any information entered into documentation systems will be easier to manage and retrieve.



Approach:

- Our vision is to accommodate this need by building pertinent knowledge bases of the domain (ontologies), multilingual terminologies, and personalized tools for processing expert knowledge
- Manage and map the terminologies and ontologies for indexing and connecting the collections
- Create domain ontologies and multilingual terminologies
- Provide semantic and multilingual access to the collections by means of a web portal

Result:

- ✓ Cultural heritage institutions now have the possibility to turn their websites from a collection of pages to a collection of open and linked data.
- ✓ The outcome is an open access web portal connected to the LOD cloud with intelligent searching functionalities for users (different communities of practice, the public at large).



Pr. Christophe Roche & Dr. Maria Papadopoulou

Condillac Research Group – University of Savoie (France) – www.condillac.org

KET Research Center - Liaocheng University (China) – www.ketrc.com

OCAM

Ouvrir la Culture
au Monde



Public



Data



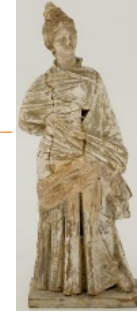
User



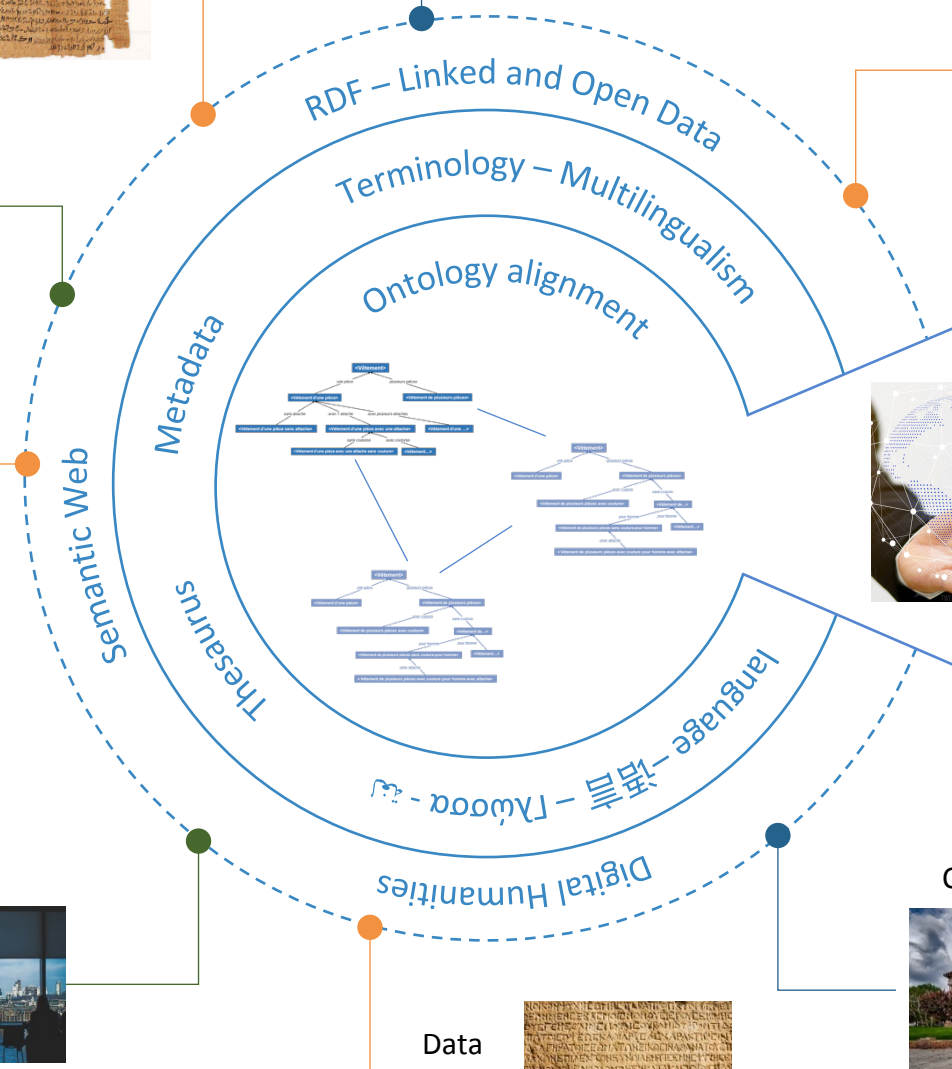
Data



Content Provider



Data



Data



Content Provider